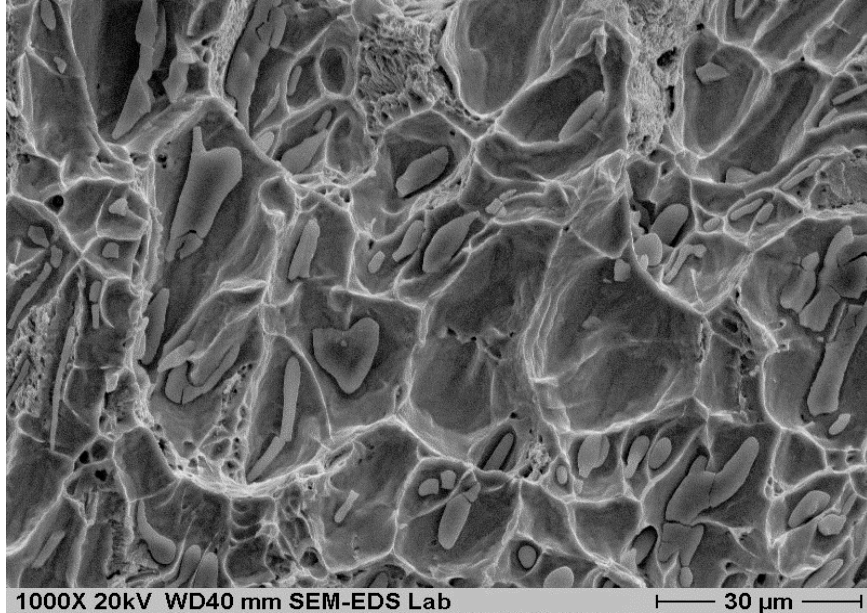


Non-Metallic Inclusions in Steel version 1.0



Features

Version: 1.00
Number of non-metallic inclusions: 1900
Number of figures: 3916
Keyword searching

Number of inclusions:
Alphabetical index: 1900
Exogenous inclusions: 327
Indigenous inclusions: 925
Iron oxide inclusions: 104
Macro inclusion index: 645
Micro inclusion index: 683
Nano inclusion index: 102
Nitride inclusions: 173
Oxide inclusions: 1348
Phosphide inclusions: 24
Silicate inclusions: 204
Spinel inclusions: 185
Sulfide inclusions: 565
Refractory inclusions: 180
Slag inclusions: 462
Steel index: 131

System requirements

For the computers with the Windows OS:

Microsoft Windows® 95, 98, ME, 2000, XP, Vista, Windows 7, 8 and 10,
RAM: Recommended 1 Gb or greater,
Hard disk free space: 400 Mb,
Recommended screen resolution: 800 x 600 pixels or higher,
Browser Microsoft Internet Explorer 6 or higher.

For the computers with the Mac OS:

Mac OS X (Jaguar, Leopard, Lion, Mountain Lion, Panther, Snow Leopard, Tiger, Mavericks, Yosemite, Sierra Nevada),
RAM: Recommended 1 Gb or greater,
Hard disk free space: 400 Mb,
Recommended screen resolution: 800 x 600 pixels or higher,
Browser Safari, Mozilla for the OS X.

For the computers with the Linux OS:

OpenSuse, Debian, Slackware, Fedora, Gentoo, Ubuntu,
RAM: Recommended 1 Gb RAM or greater,
Hard disk free space: 400 Mb,
Recommended screen resolution: 800 x 600 pixels or higher,
Browser Mozilla, Safari or any other browser which support the Java script.

Price

200.00 US \$ (Single user license, one computer)
600.00 US \$ (Server version, Intranet)

Steel Data

Email: info@steeldata.info
<http://www.steeldata.info>